

BOARD of DIRECTORS

Michael Herbert
Chair
Community Leader

Rachel White
Vice Chair
Muscogee Creek Nation
Everygy

Dal Domebo
Secretary
Kiowa, Ponca, Quapaw
Wichita Public Schools

Stuart Ray
Treasurer
Community Leader

Susan Breeden
Osage
Cargill

Chantal Nez Dominguez
Navajo Nation
Wichita State University
Community Engagement Institute

Sloane Dyer
Choctaw, Prairie Band
Potawatomi Nation
CityArts

Nicole Easton
Emprise Bank

Mike Lowry
Cherokee Tribe
Allen, Gibbs & Houlik

Juston White
Kansas Health Foundation



527 N. Grove | Wichita, KS 67214

Prsrtd Std
US Postage
PAID
Wichita KS
Permit No 84

CareConnection
JULY 2024



Hunter Health ON THE AIR

DONATE TODAY

JOIN US
in providing quality care to those who need it the most.
Care That Creates a Healthier Community

Our passion—and our purpose—is about caring for the community. When people have access to the healthcare they need, they can truly thrive. And when they thrive, our entire community follows.

- We provide high-quality healthcare to all patients, insured and uninsured.
- We work with patients to provide individualized care and support that works for them.
- With your support, we can reach more patients and empower them to take control of their wellbeing.

Your donation isn't just a one-time solution. It allows us to provide care, build facilities, and support programs that impact our community now and well into the future.



Stay Connected

@ HOME, @ WORK, @ YOUR FINGERTIPS



Did you know that Integrated Care includes dental care? Hunter Health's **Dr. Valerie Hunter** explains.

Hunter Health's Traditional Health Coordinator **Newman Washington** says Integrated Care starts with respect. Find out why.

Our Manager of Integrated Care, **Tatiana Munoz Vargas**, says communication is key. Find out why.

Hunter Health's Chief Dental Officer **Dr. Valerie Hunter** explains how Integrated Care goes further. Check out the video.

Hunter Health's **Callie Wentling** really listens to her patients first. Find out why.



Hunter Health's Pediatrician, **Dr. Conrad Agustin**, and Director of Marketing, **Paul Estrada-Cruz**, were guests on iHeartRadio's "Wichita Weekend" show to discuss the importance of scheduling kids' immunizations and well-child visits early, before the back-to-school rush.

"There's a deadline at the different school districts," **Dr. Agustin** explained, "And if you don't have those shots updated by the deadline, they're not going to let you into school."

He said these immunizations are very important, and start around the age of 4, in preschool.

"There are also immunizations that are going to be required for kids to enter kindergarten when they turn five," he said. "Beyond that, the next time that they're probably going to need immunizations is around 11. And they will require boosters beyond that, at 15 and 16, depending upon the immunizations that they've received previously."

But with Hunter Health's Integrated Care model, that means our care providers also consider a child's mental health.

Continued on page 2.



Follow us. Did you know we are also on TikTok and Instagram? These pages are a great way for us to connect with our community and share more about the work we do at Hunter Health.

Please visit our website at hunterhealth.org and check out everything it has to offer. We look forward to hearing your thoughts and working with you to make a difference in the community.

In This Issue

JULY 2024 | VOLUME 3, ISSUE 7

- 1 Hunter Health On the Air
- 2 Hunter Health Community Pharmacy
- 3 Donate Now
- 4 Our Visionary Services
- 4 Central Clinic Expansion Completed
- 5 Out & About
- 5 Coleman Congratulations

On The Air Continued.

“One of the things that we include with routine checkups, school physicals and well-child visits is screening questionnaires for anxiety and depression. And if those questionnaires happen to come back positive, then we can immediately access behavioral health.”

Then an Integrated Care specialist will come and talk to the patient and the family. If needed, they will make a diagnosis and initiate treatment. Paul said this Integrated Care model is unique.

“I really think this model is the future of the type of healthcare that should be offered across the board.”

Update On The HUNTER HEALTH COMMUNITY PHARMACY



We are approaching our one-year anniversary of owning the Hunter Health Community Pharmacy.

Convenience and care under one roof

Community Pharmacy is a one-stop shop for prescription medication needs. Our pharmacists collaborate with our providers to manage care.

A reminder of what we offer:

- Affordable prescriptions, even without insurance.
- Convenient medication pick-up before patients leave the clinic.
- Expert medication counseling.
- Sliding-fee-scale discounts for eligible patients.
- Access to patient assistance programs

Discount drug update

We're excited to announce that our updated pricing model went into effect on August 1st, which includes a discount drug list. For medications on this list, a 30-day supply of medication will be \$4, and a 100-day supply will be \$10. All patients will be eligible for this pricing regardless of their sliding fee schedule.

Watch our video to learn more about everything we've covered!



A Site For GREAT EYES



Hunter Health's Integrated Care model includes top-tier vision services for all ages.. At Hunter Health, we're dedicated to keeping your sight sharp and your eyes healthy.

We Offer:

- Routine eye exams
- Care for chronic eye diseases
- Urgent eye care
- Management of diabetic eye disease, glaucoma, and macular degeneration
- Prescriptions for glasses

Hunter Health's Dr. Wiggins says he chose to work at Hunter Health because “A large percentage of the population struggles to get even basic health care services. I want to be part of the solution.”



Hunter Health COMPLETES CENTRAL CLINIC EXPANSION



Hunter Health is excited to announce that construction is finished, and the expansion of our Central Clinic is now complete. This comes after several months of planning and construction work to accommodate our growing patient community and to enhance accessibility.

We have more than 200 new parking spaces for patients and employees in our beautifully paved parking lot, complete with lighting, landscaping, and strong security camera coverage.

Our central clinic has been expanded by more than 17,000 square feet, and employees moved into the new space on July 9th. We now have expanded clinic offices and team spaces for our providers, along with a larger break room and larger training room. The clinic's front has also expanded for future growth of our clinical care.

OUT and ABOUT

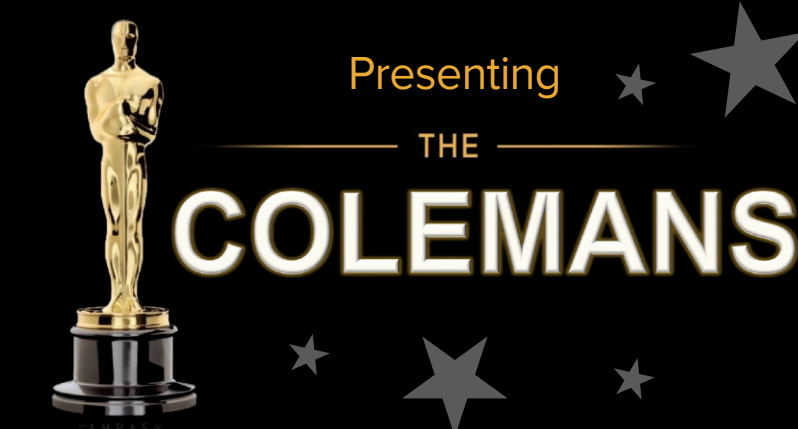
July was action-packed for Hunter Health!



We partnered with **The Lord's Diner**, offering free dental kits and more to tackle community health head-on.

In solidarity with Wichita's **Unity in the Community marches**, we joined city leaders to promote peace and combat youth violence.

At **Music in the Park**, our team provided blood pressure checks and HIV/STI education, blending music with essential community support under the theme "Health and Wealth."



COLEMAN CONGRATULATIONS

Over the past year, Hunter Health partnered with Coleman Associates through a program centered around Dramatic Performance Improvement (DPI). The goals were to enhance the service we provide to patients and the community, while also improving work-life balance for our staff. We're excited to announce that we've successfully graduated from the program!

Although we've reached this milestone, our commitment to continuous improvement remains strong. We'll keep striving to make positive changes that benefit both our patients and our team.

A big thank you to all the staff involved in this engagement. To celebrate, we held an Oscars-style award ceremony—because who needs a red carpet when you have a great team?